

# PANIO

HW81200 User manual

# Contents

<b>1. Packing .....</b>	<b>3</b>
<b>2. Diagram .....</b>	<b>3</b>
<b>3. PC Control software .....</b>	<b>3</b>
<b>4. Login interface .....</b>	<b>3</b>
<b>5. Settings.....</b>	<b>4</b>
<b>6. Operation.....</b>	<b>6</b>
<b>7. Tools.....</b>	<b>8</b>
<b>8. Management.....</b>	<b>10</b>

### 1. Packing

No.	Name	Qty	Unit	No.	Name	Qty	Unit
1	HW81200	1	Pcs	3	Quick Guide	1	Pcs
2	Power cord	1	Pcs				

### 2. Diagram



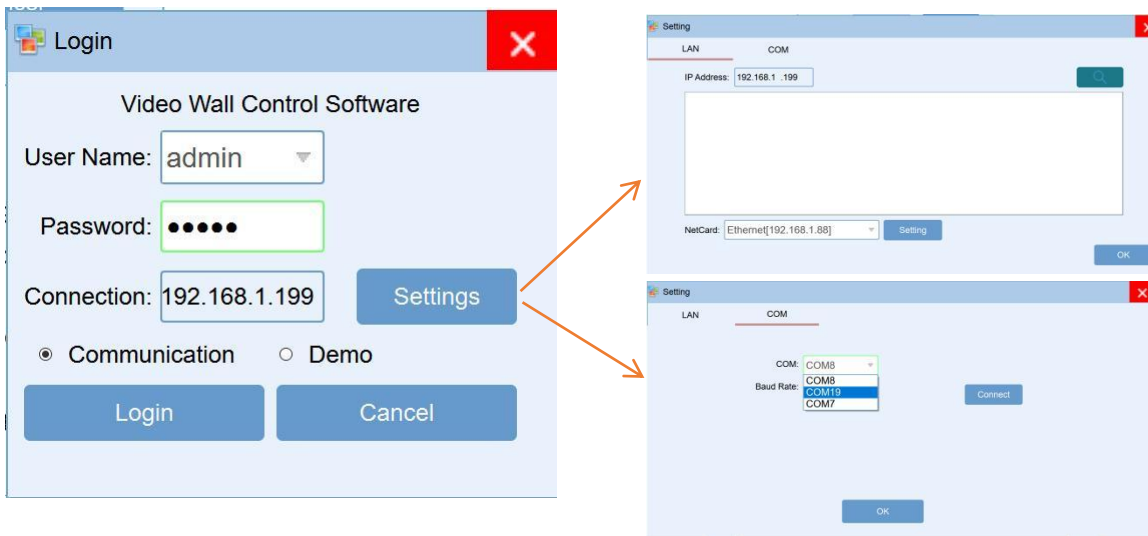
### 3. PC Control software

To protect environment, this control software will be sent by email and can download from the dealers website, after download or have the software ready, please follow the guide below to get started: When open the control software folder, please click and run the "VWC\_V5.1".exe file.

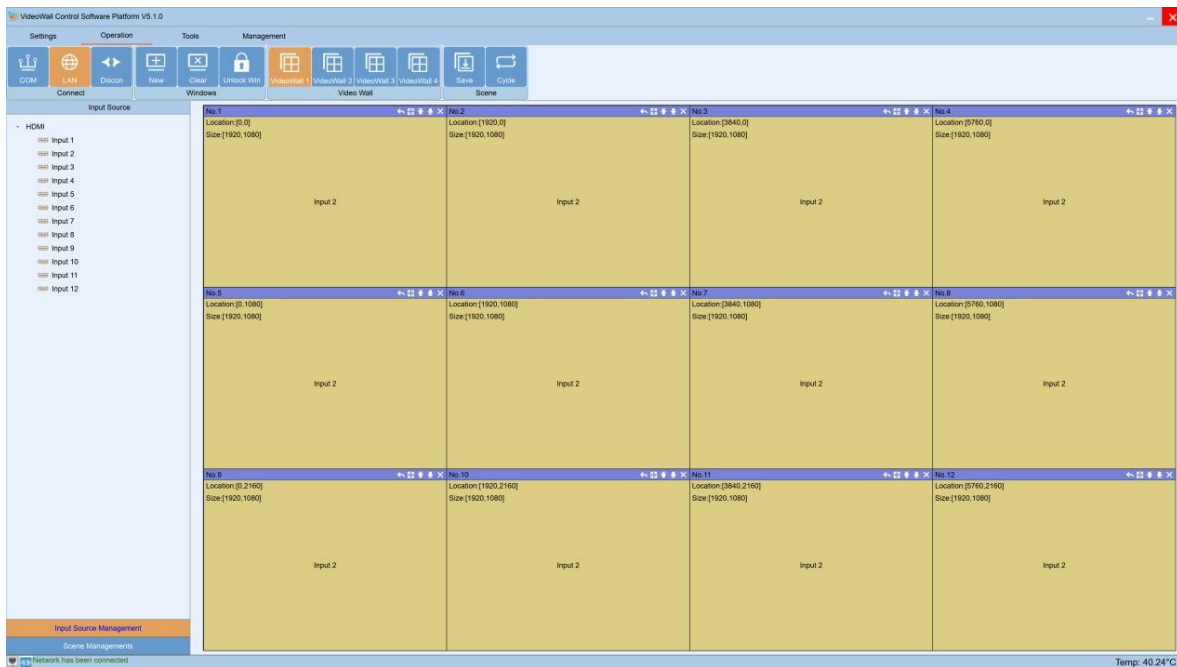
vcruntime140.dll	6/9/2016 10:46 PM	Application extension	82 KB
VWC_V5.1	9/2/2020 10:15 AM	Application	7,814 KB

### 4. Login interface

To click "Settings" login, it will be showing below interface, users can set up the LAN(IP) or the COM(RS232) as below, the default IP address is 192.168.1.199, and the baud rate is 115200.



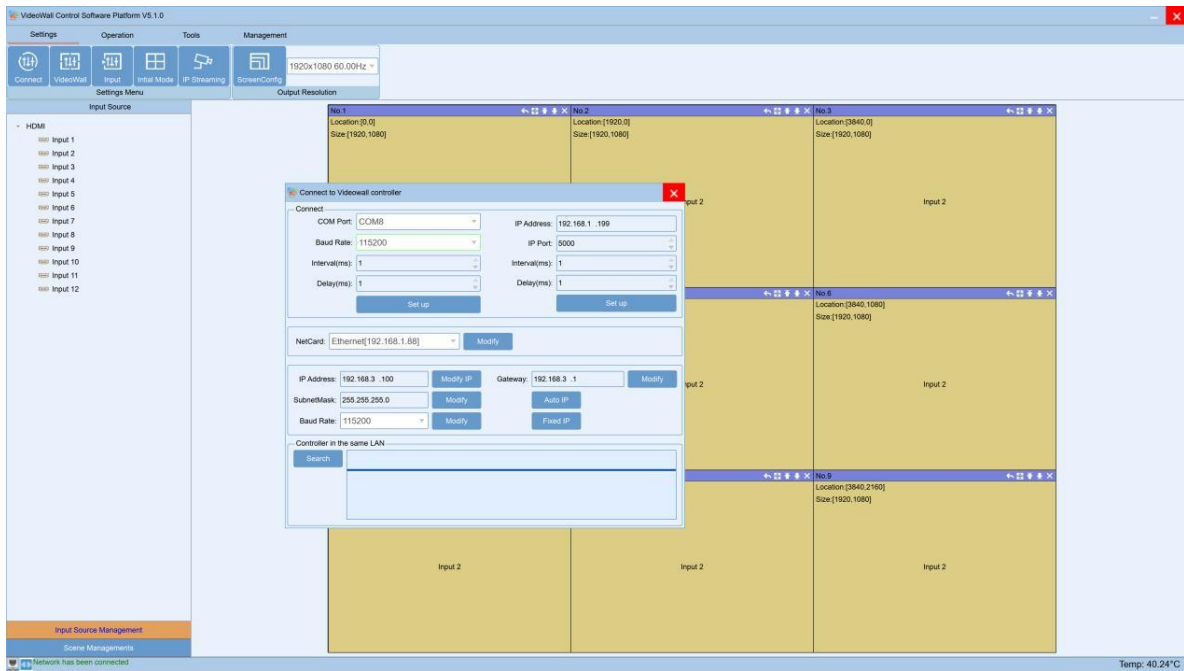
By default, the user name is Admin and the password is blank, then click "Login" button to log in, it will be showing the "Main" interface as below:



## 5. Settings

This interface is for users to setup the connect method, Video Wall, Input etc settings:

Connect is for users to setup the communication methods for the control PC and the controller, users can set up the COM and IP address those parameters here. After modified the parameters, will need to reconnect and restart the controller.



For the VideoWall setting, it's for users to setup the Video Wall accordingly.

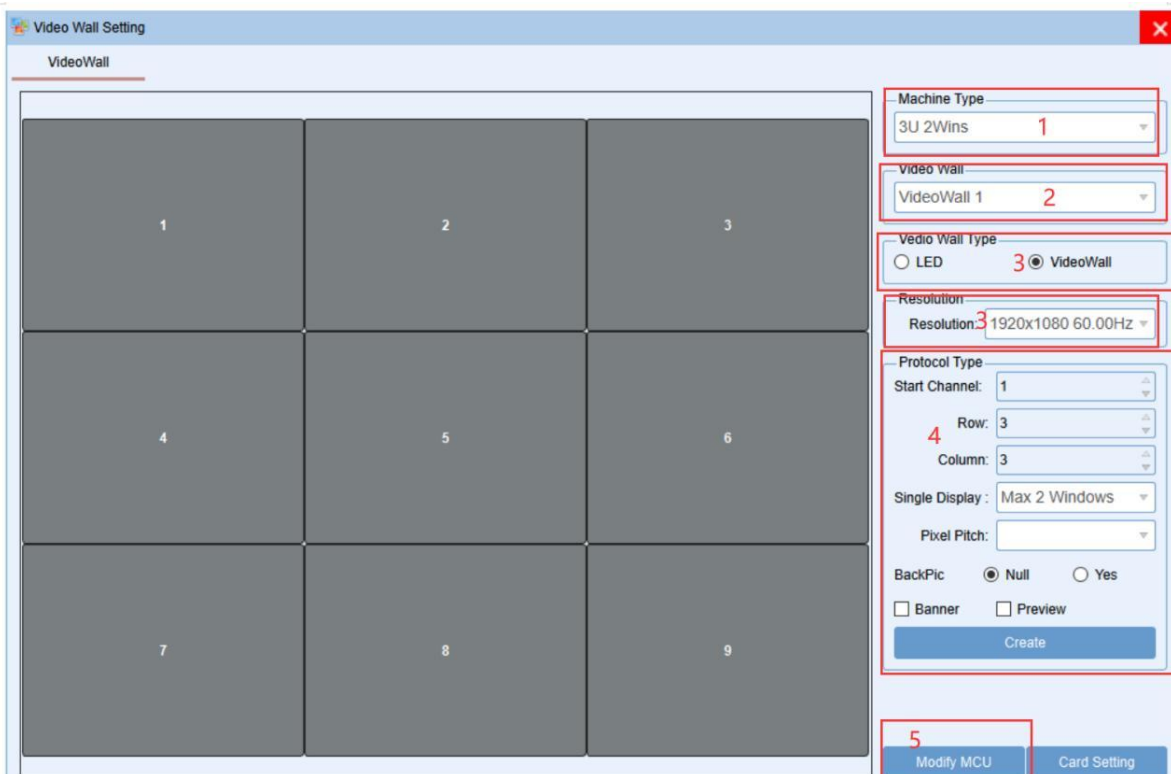
**Step 1:** According to the controller size & feature to choose the right one, here take example with the 3U 2 wins

**Step2:** Choose the video wall group, here take example VideoWall 1.

**Step3:** Choose the resolution for the video wall, usually recommend the 1920x1080P@60Hz.

**Step4:** Set up the Video Wall size, here take example of a 3x3 Video Wall, so the Row is 3, Column is 3, and the click "Create".

**Step5:** After all the above 4 steps, still need to click the "modify MCU" to finish the settings.



For the Input source setting, it's for users to setup the input source group, source and card type.

No.	Name	Channel	Card ID	Machine ID	Card Type	Source	Status	Win Size	Con Size	Input
1	Input 1	1	0	1	MIN	HDMI	True	(0,0,0x0)	(0,0,0x0)	0x0
2	Input 2	2	1	1	MIN	HDMI	True	(0,0,0x0)	(0,0,0x0)	0x0
3	Input 3	3	2	1	MIN	HDMI	True	(0,0,0x0)	(0,0,0x0)	0x0
4	Input 4	4	3	1	MIN	HDMI	True	(0,0,0x0)	(0,0,0x0)	0x0
5	Input 5	5	4	1	MIN	HDMI	True	(0,0,0x0)	(0,0,0x0)	0x0
6	Input 6	6	5	1	MIN	HDMI	True	(0,0,0x0)	(0,0,0x0)	0x0
7	Input 7	7	6	1	MIN	HDMI	True	(0,0,0x0)	(0,0,0x0)	0x0
8	Input 8	8	7	1	MIN	HDMI	True	(0,0,0x0)	(0,0,0x0)	0x0
9	Input 9	9	8	1	MIN	HDMI	True	(0,0,0x0)	(0,0,0x0)	0x0
10	Input 10	10	9	1	MIN	HDMI	True	(0,0,0x0)	(0,0,0x0)	0x0
11	Input 11	11	10	1	MIN	HDMI	True	(0,0,0x0)	(0,0,0x0)	0x0
12	Input 12	12	11	1	MIN	HDMI	True	(0,0,0x0)	(0,0,0x0)	0x0

The right-hand side of the dialog contains two 'Parameters Setting' panels. The top panel is for 'VideoWall 1' and includes a 'Device Source' dropdown set to '12' and a 'Source Group No.' dropdown set to '1', with a 'Create' button below. The bottom panel includes dropdowns for 'Channel No.' (1), 'Card ID' (0), 'Machine ID' (1), 'Card Type' (MIN), and 'Source Type' (HDMI), along with a 'Channel Status' checkbox checked to 'Open Channel'. 'Confirm' and 'Cancel' buttons are at the bottom right.

For the Initial mode, IP streaming and the Screen config settings are only used when have the specific cards plugged into the controller.

## 6. Operation

Under this interface, users can see the Connect, Windows, Video Wall and Scene those function.

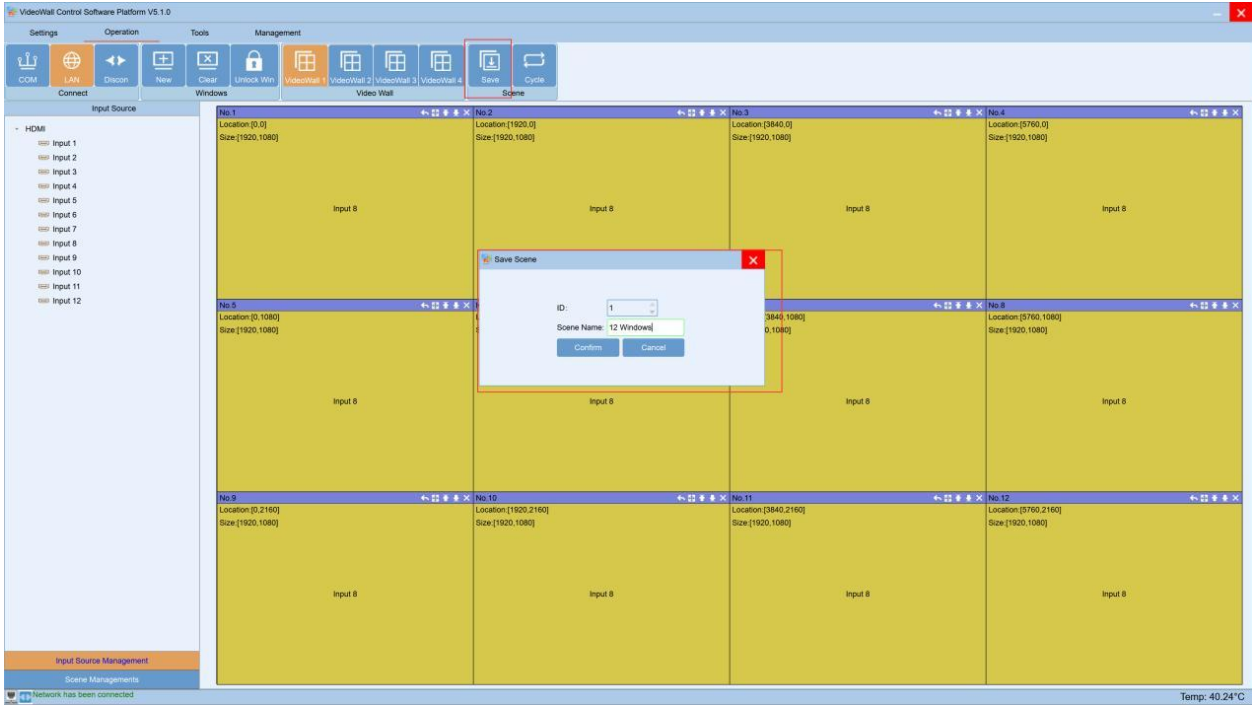
The interface is titled 'VideoWall Control Software Platform V5.1.0'. It has a menu bar with four sections: 'Settings', 'Operation', 'Tools', and 'Management'. Below the menu bar are several functional buttons arranged in a grid. The 'Connect' section includes 'COM', 'LAN', and 'Discon'. The 'Windows' section includes 'New', 'Clear', and 'Unlock Win'. The 'Video Wall' section includes four buttons labeled 'VideoWall 1', 'VideoWall 2', 'VideoWall 3', and 'VideoWall 4'. The 'Scene' section includes 'Save' and 'Cycle'.

Connect is for users to click to sync with controller either by the COM, LAN or to Discon(disconnect). Once click the LAN or COM to sync, the software will pop-up and “wait” window to sync. Windows is for users to open a new window, clear all the windows or lock/unlock the windows Click “New”, it will open a window of the selected source to all the connected displays, also show the windows on the control software; Users also can select the source and then use the mouse to drag any size window on the video wall.

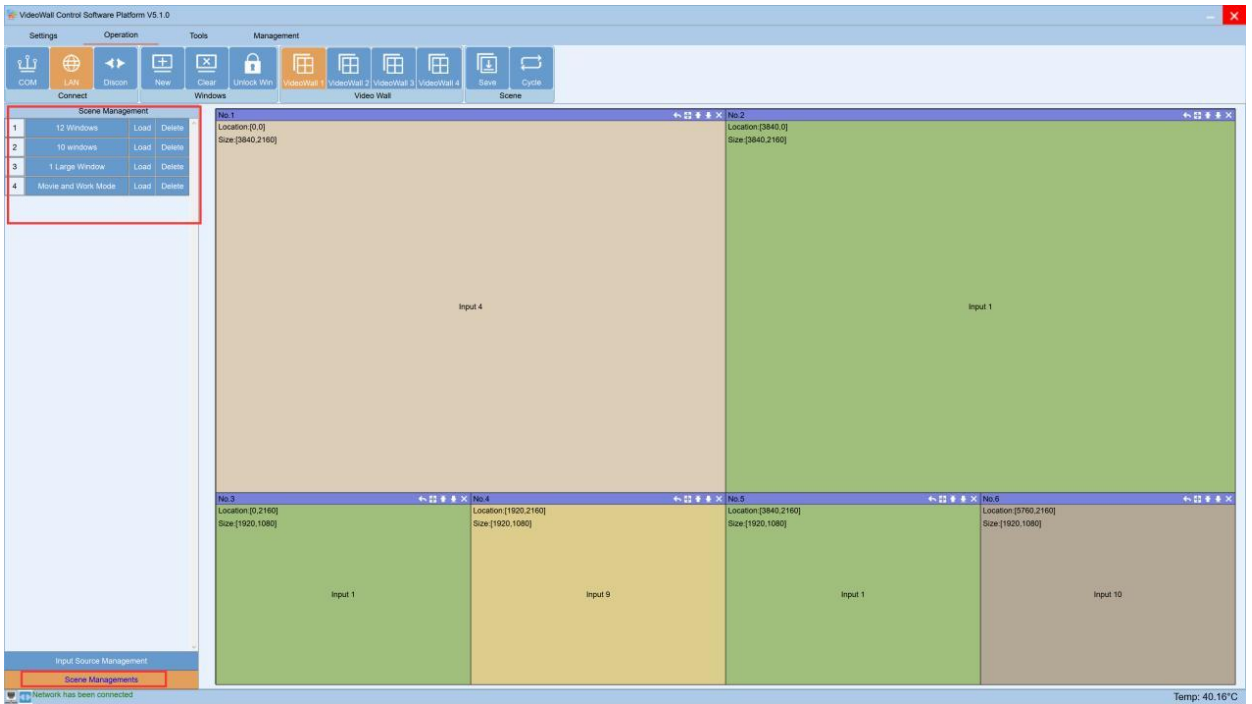
If click the “Clear” tap, it will close all the windows:

Video Wall is for users to select and control the specific Video Wall, this processor can support 4 video wall groups. Scene is for users to save the current switching status and setup for the scenes cycling.

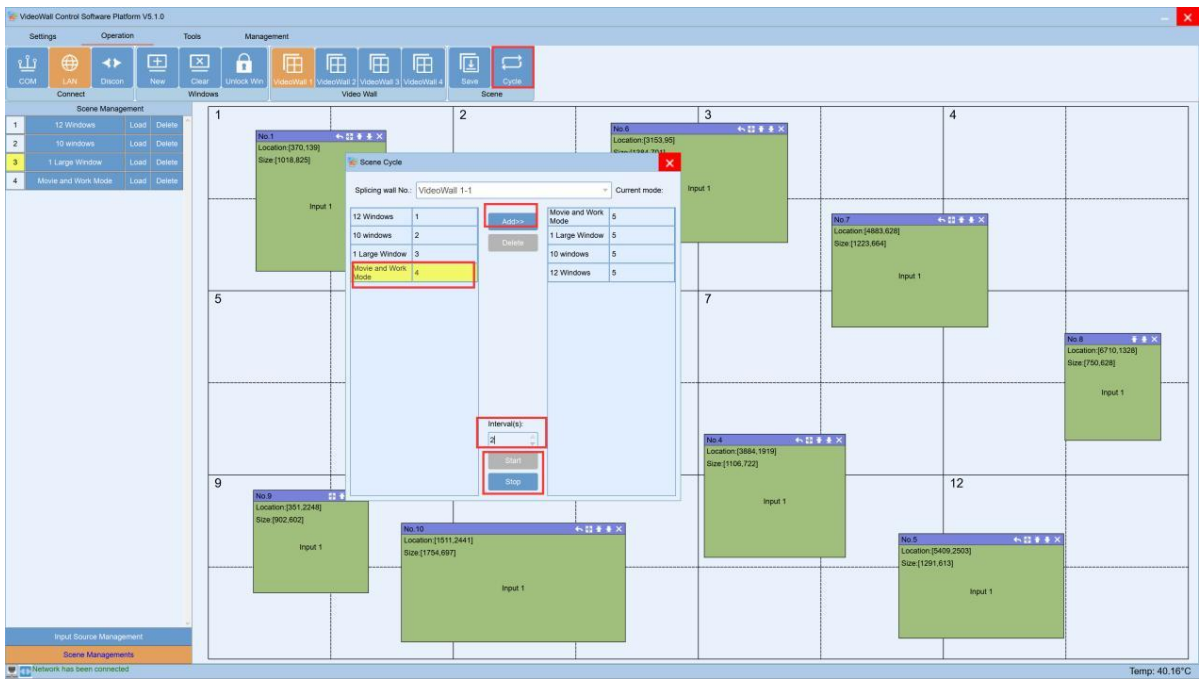
To save the current status, users will only need to click the “Save” button, it will pop-up the Save scene window, users can enter the scene name and click to save.



Users can click the “Scene Management” at the left down corner, it will show all the saved scenes. Then users can rename it, load or delete it.

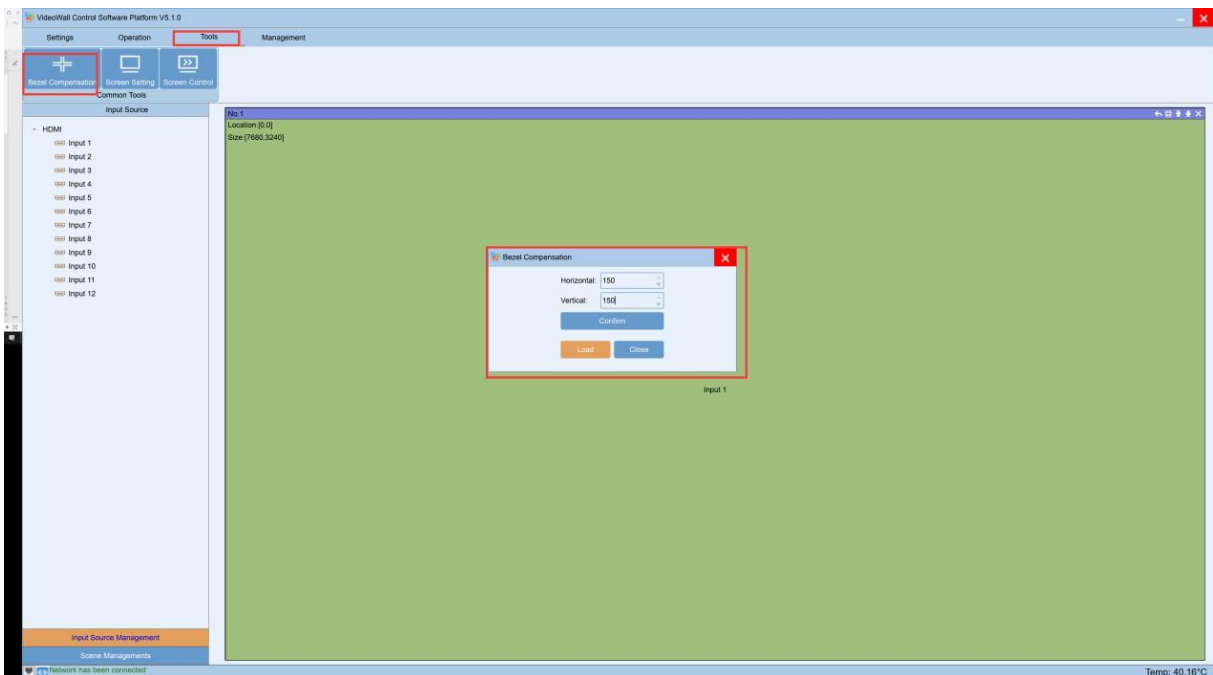


Users also can setup the scenes cycling, but click the “Cycle” button on the top of the control software.



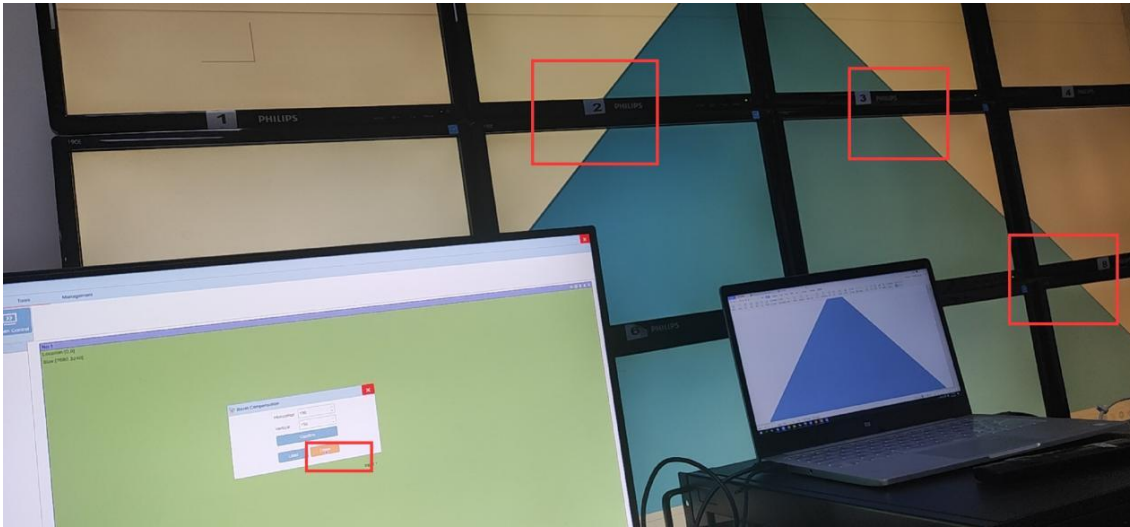
## 7. Tools

Under this interface, users can setup the bezel correction, screen settings, screen control. Bezel compensation is for the users who have old and large bezel TV, users can set up the Horizontal and Vertical parameter to correct the image showing the displays.

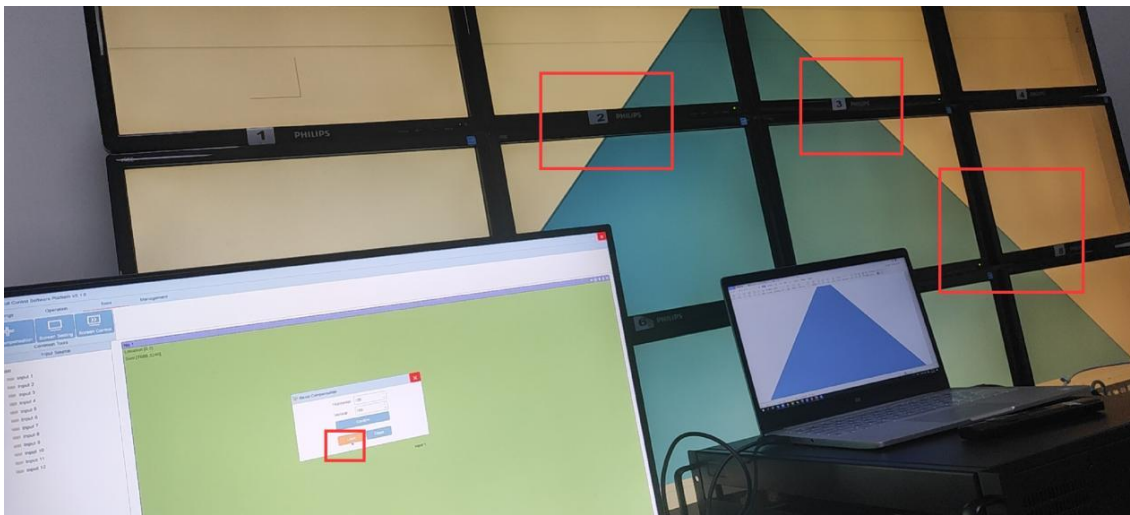


When no bezel correction or correction OFF, it will be showing as below:

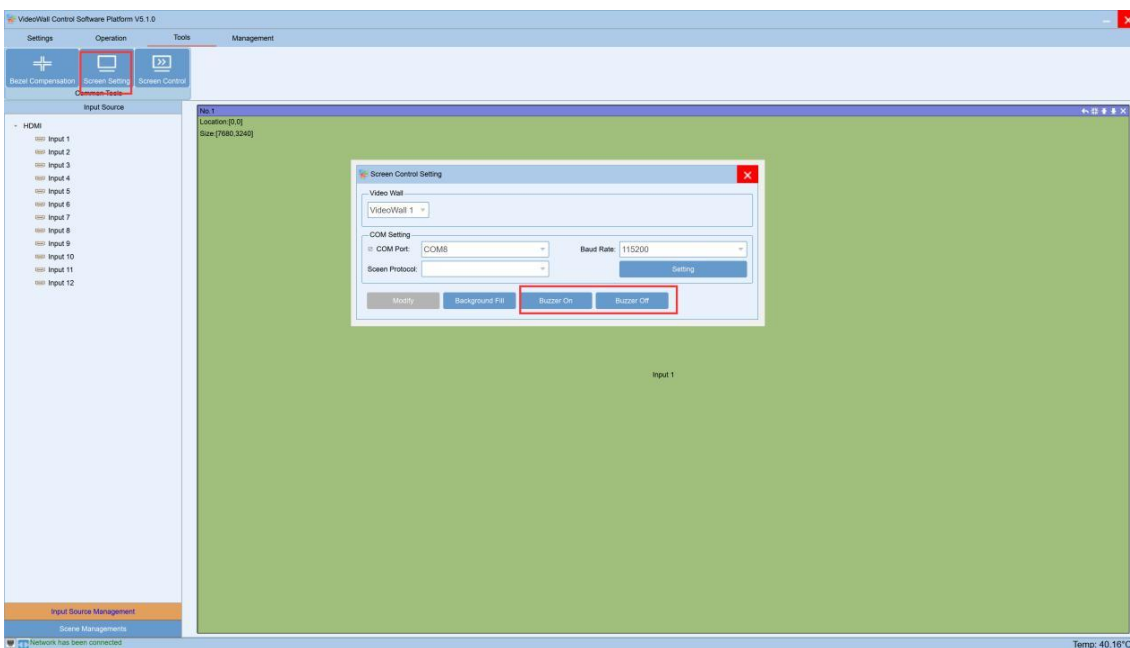




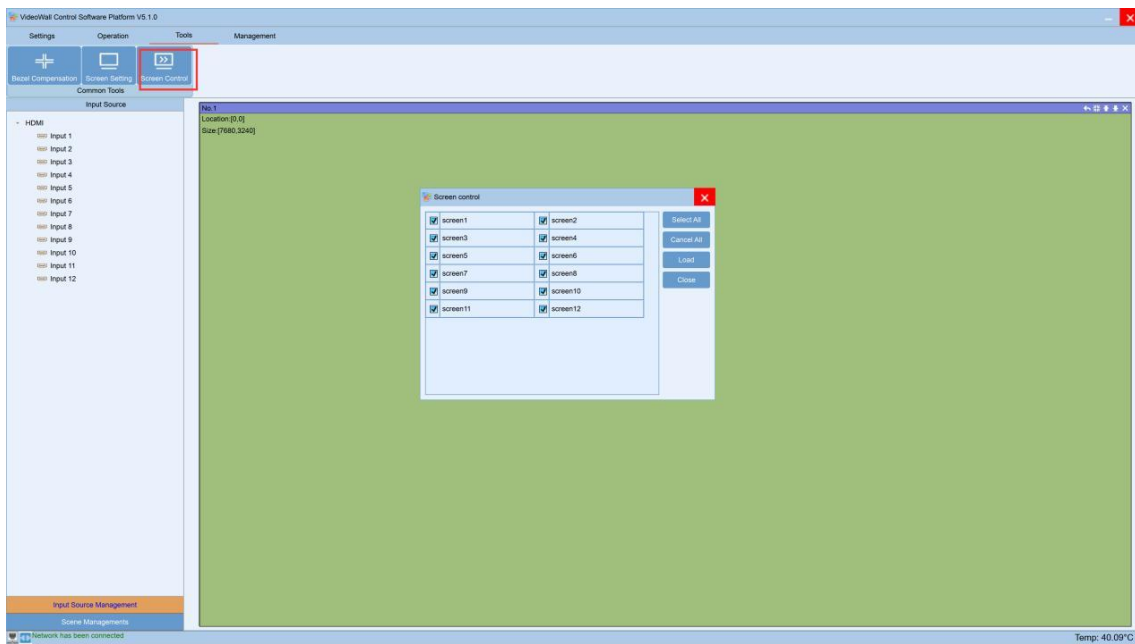
When with bezel correction or correction ON, it will be showing as below:



Screen setting is for the users to set up the parameter to control the screens, Turn on or turn off the beep sound of the controller.



The screen control is to select the screens for controller to control them, this function is mainly for turning off or turning on the screens. This function will need to make sure there's a RS232 cable connected the screens and controller, also need to know the COM commands for the screens.



## 8. Management

Under this interface, users can manage the different users to log in with different rights. To add a new user, will need to make sure it's logged in with under the Admin, then can add/ manage the users. A right click on the "admin", it will show the add users option:

